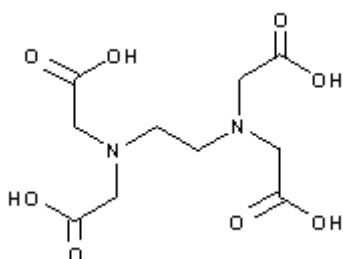
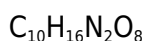




PRODUCT CODE: 141026

EDTA (USP-NF, BP, Ph. Eur) pure, pharma grade



M.= 292,24

CAS [60-00-4]

EINECS 200-449-4

TARIC 2922 49 85 90

SYNONYMS: Edetic Acid, EDTA, Ethylenedinitriletetraacetic Acid, N,N'-1,2-Ethanediy-bis[N-(Carboxymethyl) Glycine], Titriplex II

PHYSICAL DATA: crystalline powder, White, Soluble in water 0,5 g/l at 25 °C M.P.: 220 °C • pH(10 g/l sol.)2,8 •

BIBLIOGRAPHY: Merck Index **12**, 3.559 13, 3.546 Sax **EIX000** • Safety **2**, **1605 D** • Beilstein **4**, **III**, **1187 IV**, **2449** • BRN 1716295 • Fieser **1373** • ACS **XI** • BP.**2018** • USP -**NF 36** • Ph. Eur. **8.0** (2014) 5.4 , 3933 **9.0** (2017) 5.4 , 3933 •

HAZARDOUS: RTECS: AH 4025000 • TDLO oral rat 7.632 mg/kg • LD50 oral rat 4.500 mg/kg • LD50 ipr mus 250 mg/kg



H: H319 •

P: P264 • P280 • P305+P351+P338 • P337+P313 •

OBSERVATIONS: Storage away from direct light. •

SPECIFICATIONS:

Assay (Compl.)	98,0-100,5 %
Identity :	
Identity according to Pharmacopoeias:	passes test

Maximum limit of impurities

Appearance of solution	passes test
Residue on ignition (as SO ₄)	0,2 %
Chloride (Cl)	0,02%
Residual solvents (Ph.Eur/USP)	passes test
Nitrilotriacetic Acid [(CH ₂ COOH) ₃ N]	0,1%
Heavy metals (as Pb)	0,002%

Fe	0,005 %
----	---------

Elemental impurities (ICH Q3D):

Class 1

Cd	0,5 ppm
Pb	1 ppm
As	1,5 ppm
Hg	1,5 ppm

Class 2A

Co	5 ppm
V	10 ppm
Ni	20 ppm

Class 2B

Tl	0,8 ppm
Au	10 ppm
Pd	10 ppm
Ir	10 ppm
Os	10 ppm
Rh	10 ppm
Ru	10 ppm
Se	15 ppm
Ag	15 ppm
Pt	10 ppm

Class 3

Li	55 ppm
Sb	120 ppm
Ba	140 ppm
Mo	25 ppm
Cu	250 ppm
Sn	600 ppm
Cr	25 ppm