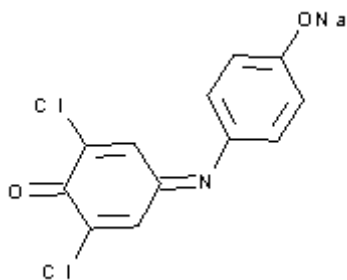


**PRODUCT CODE: 132056****2,6-Dichlorophenol Indophenol Sodium Salt 2-hydrate (Reag. Ph. Eur.) for analysis, ACS** $C_{12}H_6Cl_2NNaO_2 \cdot 2H_2O$ $C_{12}H_6Cl_2NNaO_2 \cdot 2H_2O$ 

M.= 326,09

CAS [620-45-1]

EINECS 210-640-4

TARIC 2925 29 00 00

SYNONYMS: 2,6-Dichloroindophenol Sodium Salt**PHYSICAL DATA:** powder, Dark green, Soluble in water 30 g/l/Soluble in alcohol 20 g/l**BIBLIOGRAPHY:** Merck Index **12**, 3.118 Safety **2**, **1138 D** • Römp **8**, **939** • Conn's **IX** 374 • ACS **XI** •**HAZARDOUS:** RTECS: GU 5495000 •**SPECIFICATIONS:**Identity :
Identity

IR passes test

Maximum limit of impurities

Loss on drying at 120°C

12,0%

Foreign dyes

passes test

Ed.: 3 . Vig.: 15.01.2011 .

Prod.: 132056