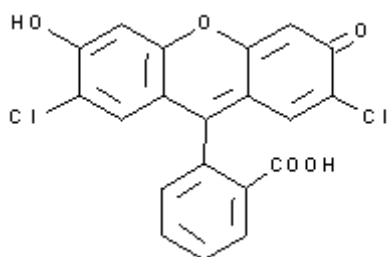
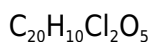
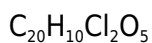


**PRODUCT CODE: 133606****2',7'-Dichlorofluorescein (Reag. Ph. Eur.) for analysis, ACS**

M.= 401,20

CAS [76-54-0]

EINECS 200-968-6

TARIC 3204 90 00 00

**PHYSICAL DATA:** powder, Orange, Soluble in water 0,1 g/l/Soluble in alcohol 30 g/l**BIBLIOGRAPHY:** Conn's IX 346 • Beilstein 19, I, 722 V, 6/461 • BRN 58009 • ACS XI •**HAZARDOUS:****SPECIFICATIONS:**

Identity :

Identity

Suitability: as adsorption indicator

T.L.C.

IR passes test

passes test

passes test

**Maximum limit of impurities**

Insoluble matter in 70% ethanol

passes test

Cu

0,005 %

Pb

0,005 %

Ed.: 3 . Vig.: 15.01.2011 .

Prod.: 133606