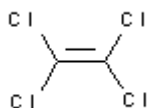
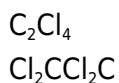


**PRODUCT CODE: 331455****Tetrachloroethylene for IR**
For hydrocarbons determinationM.= 165,83 CAS [127-18-4]
TARIC 2903 23 00 00

EINECS 204-825-9

SYNONYMS: Ethylene Tetrachloride, Perchloroethylene**PHYSICAL DATA:** liquid, Clear, Colourless, Soluble in water 0,15 g/l at 20 °C D 20/4 1,622 • M.P.: -22,35 °C • B.P.: 121,2 °C • n₂₀/D : 1,5056 • Vap. press. (20 °C) 19 hPa • Viscosity 20 °C 0,89 mPa.s • Dielec. constant 20 °C 2,4 • Evap. number (DIN 53170) 11 • Heat evap. 121 °C 209 KJ/Kg • Satur. conc. 20 °C 126 g/m³ •**BIBLIOGRAPHY:** Merck Index **12**, 9.332 13, 9.265 Sax **TBQ250** • Safety **2** , **3247 C** • Kühn-Birett **P 5** • Ullmann **(5.)**6 , 302 • Beilstein **1** , **187 I** , **79 II** , **161 III** , **664 IV** , **715** • BRN 1361721 • ACS **XI** •**HAZARDOUS:** C.E: 602-028-00-4 • RTECS: KX 3850000 • LD L0 oral rbt 5.000 mg/kg • LD L0 rbt 5g/Kg • LD50 oral rat 2.629 mg/kg • LC L0 man 600ppm / 10 min • LC L0 inh rat 34200 ppm / 8h • LC50 rat 34200mg/m³ / 8h • VLA-EC 100 ppm689 mg/m³ VLA-ED 25 ppm172 mg/m³H: H351 • H411 •
P: P201 • P202 • P273 • P281 • P308+P313 • P501 • P391 • P405 •**TRANSPORT REGULATIONS:** UN: 1897 • ADR: 6.1/III • IMDG: 6.1/III • IATA: 6.1/III • PAX: 655 • CAO: 663 • (E) •**WEIGHT/VOLUME INFORMATION:** 1l~1,622 kg 1kg~0,617 l

SPECIFICATIONS:

Minimum assay (G.C.)	99,8 %
Density at 20/4	1,620 - 1,624
Maximum limit of impurities	
APHA colour	10
Acidity	0,0005 meq/g
Non-volatile matter	0,001 %
Chlorine	passes test
Chloride (Cl)	0,0001 %
Hydrocarbons (Absorbance of the maximum peak at 2930 cm-1; range 3200-2700 cm-1; refer to Hexadecane: Isooctane: Benzene)	11 ppm
Water (H2O)	0,005 %

Product microfiltered (0.2 um) and bottled under nitrogen atmosphere.

Ed.: 3 . Vig.: 12.07.2017 .

Prod.: 331455