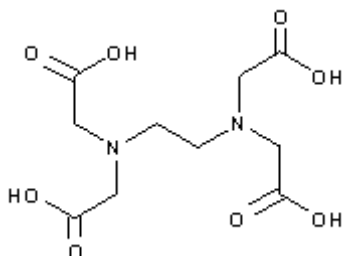
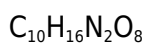




**PRODUCT CODE: 131026**

**EDTA for analysis, ACS**

---



M.= 292,24

CAS [60-00-4]

EINECS 200-449-4

TARIC 2922 49 85 90

**SYNONYMS:** Edetic Acid, EDTA, Ethylenedinitriletetraacetic Acid, N,N'-1,2-Ethanediy-bis[N-(Carboxymethyl) Glycine], Titriplex II

**PHYSICAL DATA:** crystalline powder, White, Soluble in water 0,5 g/l at 25 °C M.P.: 220 °C • pH(10 g/l sol.)2,8 •

**BIBLIOGRAPHY:** Merck Index **12**, 3.559 13, 3.546 Sax **EIX000** • Safety **2**, **1605 D** • Beilstein **4**, **III**, **1187 IV**, **2449** • BRN 1716295 • Fieser **1373** • ACS **XI** • BP.**2018** • USP -**NF 36** • Ph. Eur. **8.0** (2014) 5.4 , 3933 **9.0** (2017) 5.4 , 3933 •

**HAZARDOUS:** RTECS: AH 4025000 • TDLo oral rat 7.632 mg/kg • LD50 oral rat 4.500 mg/kg • LD50 ipr mus 250 mg/kg



H: H319 •

P: P264 • P280 • P305+P351+P338 • P337+P313 •

**OBSERVATIONS:** Storage away from direct light. •

**SPECIFICATIONS:**

Assay (Compl.)	99,4-100,6%
Identity :	
Identity	IR passes test

**Maximum limit of impurities**

Insoluble matter in NH <sub>4</sub> OH	0,005 %
Residue on ignition (as SO <sub>4</sub> )	0,1 %
Chloride (Cl)	0,005%
Nitrilotriacetic Acid [(CH <sub>2</sub> COOH) <sub>3</sub> N]	0,1%
Heavy metals (as Pb)	0,001%

Ca	0,001	%
Cu	0,001	%
Fe	0,001	%
Mg	0,0005	%
Ni	0,001	%
Pb	0,001	%

Ed.: 3 . Vig.: 15.01.2011 .

Prod.: 131026