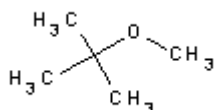


**PRODUCT CODE: 213312****tert-Butyl Methyl Ether technical grade**

 $C_5H_{12}O$ $C_5H_{12}O$ 

M.= 88,15

CAS [1634-04-4]

EINECS 216-653-1

TARIC 2909 19 90 90

SYNONYMS: 1,1-Dimethyl ethyl methyl ether, 2-Methoxy-2-Methylpropane, Methyl-ter-Butyl Ether, MTB, MTBE**PHYSICAL DATA:** liquid, Clear, Colourless, Soluble in water 51 g/l at 20 °C D 20/4 0,742 • M.P.: -109 °C • B.P.: 55,2 °C • n_{20/D} : 1,3689 • Flash P.: -28 °C • Ign. T.:460 °C • Vap. press. (20 °C) 268 hPa • Viscosity 25 °C 0,27 mPa.s • D. M. 20 °C 1,23 Debye • Heat evap. 55 °C 342 KJ/Kg • Expl. limit 1,7 %(V) 8,4 %(V) •**BIBLIOGRAPHY:** Merck Index **12**, 6.111 13, 6.059 Sax **MHV**859 • Safety **2** , **641 A** • Beilstein **1** , **381 II** , **415 III** , **1576 IV** , **1615** • BRN 1730942 • Fieser **4333** • ACS **XI** •**HAZARDOUS:** C.E: 603-181-00-X • RTECS: KN 5250000 • LD50 oral rat 4.000 mg/kg • LC50 inh rat 23576 ppm / 4h • VLA-ED 40 ppm 147 mg/m³

H: H225 • H315 •

P: P210 • P233 • P240 • P241 • P242 • P243 • P264 • P280 • P302+P352 • P303+P361+P353 • P321 • P332+P313 • P362 • P370+P378 • P403+P235 • P501 •

TRANSPORT REGULATIONS: UN: 2398 • ADR: 3/II • IMDG: 3/II • IATA: 3/II • PAX: 353 • CAO: 364 • (D/E) •**WEIGHT/VOLUME INFORMATION:** 1l~0,740 kg 1kg~1,351 l

SPECIFICATIONS:

Assay (G.C.)

99%

Water (H₂O)

0,05 %

Ed.: 4 . Vig.: 29.10.2014 .

Prod.: 213312