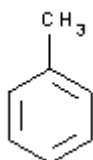
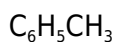


**PRODUCT CODE: 211745****Toluene technical grade**



M.= 92,14

CAS [108-88-3]

EINECS 203-625-9

TARIC 2902 30 00 00

SYNONYMS: Methylbenzene, Phenylmetane, Toluol

PHYSICAL DATA: liquid, Clear, Colourless, Soluble in water 0,05 g/l at 20 °C D 20/4 0,866 • M.P.: -94,99 °C • B.P.: 110,62 °C • n_{20/D} : 1,4963 • Flash P.:4,4 °C • Ign. T.:535 °C • Vap. press. (20 °C) 29 hPa • Viscosity 25 °C 0,59 mPa.s • D. M. 20 °C 0,36 Debye • Dielec. constant 25 °C 2,37 • Evap. number (DIN 53170) 6 • Heat evap. 111 °C 360 KJ/Kg • Satur. conc. 20 °C 110 g/m³ • Expl. limit 1,2 % (V) 7 % (V) •

BIBLIOGRAPHY: Merck Index **12**, 9.667 13, 9.607 Sax **TGK750** • Safety **2** , **3363 D** • Kühn-Birett **T 13** • Ullmann **(4.)23** , 301 • Beilstein **5** , **280 I** , **144 II** , **209 III** , **651 IV** , **766** • BRN 635760 • ACS **XI** • ISO 6353/2-1983R - 39 , 55 •

HAZARDOUS: C.E: 601-021-00-3 • RTECS: XS 5250000 • LD₅₀ oral rat 636 mg/kg • VLA-ED 50 ppm 192 mg/m³ VLA-EC (Spain) 100 ppm 384 mg/m³ Factor for short-term value (Germany) 4

Derived No Effect Level (DNEL)

Population Inhalation, acute (systemic) 226 mg/m³ Population Inhalation, acute (local) 226 mg/m³ Population, Dermal, long exposure (systemic) 226 mg/m³ Population Inhalation, long term (systemic) 226 mg/kg bw/24h Population Inhalation, long term (systemic) 56,5 mg/m³ Population, oral, long term (systemic) 8.13 mg/kg bw/24h

Predicted No Effect Concentration (PNEC)

Freshwater Sediment 0.68 mg/l Marine water Sediment 0.68 mg/l Sewage treatment plant 13.61 mg/l Freshwater Sediment 16.39 mg/kg Marine water Sediment 16.39 mg/kg Soil 2.89 mg/kg



H: H225 • H315 • H361fdi • H336 • H373 • H304 •
P: P201 • P210 • P241 • P260 • P304+P340 • P301+P310 • P303+P361+P353 • P235 • P501 •

TRANSPORT REGULATIONS: UN: 1294 • ADR: 3/II • IMDG: 3/II • IATA: 3/II • PAX: 353 • CAO: 364 • (D/E) •

WEIGHT/VOLUME INFORMATION: 1l~0,865 kg 1kg~1,156 l

OBSERVATIONS: Product controlled as a drug precursor. •

SPECIFICATIONS:

Assay (G.C.)	99,5%
Density at 20/4	0,863-0,867
Acidity	0,003 meq/g
Water (H2O)	0,1 %

Ed.: 3 . Vig.: 15.01.2011 .

Prod.: 211745