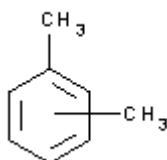


**PRODUCT CODE: 141769****Xylene, mixture of isomers pure** C_8H_{10} C_8H_{10} 

M.= 106,17

CAS [1330-20-7]

EINECS 215-535-7

TARIC 2902 44 00 00

Isomer mixture, mainly m-Xylene ca. 70%, Ethylbenzene 20% and variable amounts of o- and p-Xylene .**SYNONYMS:** Dimethylbenzene, Xilol

PHYSICAL DATA: liquid, Clear, Colourless, Soluble in water 0,2 g/l at 20 °C D 20/4 0,864 • B.P.: 137 - 144 °C • n_{20/D} : 1,497 • Flash P.: 29 °C • Ign. T.: 465 °C • Vap. press. (20 °C) 8 hPa • Dielec. constant 25 °C 2,4 • Evap. number (DIN 53170) 13,5 • Satur. conc. 20 °C 35 g/m³ • Expl. limit 1,7 % (V) 7,6 % (V) •

BIBLIOGRAPHY: Merck Index **12**, 10.214 13, 10.136 Sax **XGS000** • Safety **2** , **3619 C** • Kühn-Birett **X 3** • Ullmann **(5.)** 13 , 409 • Beilstein **5** , **360** • ACS **XI** • ISO 6353/3-1987R - 95 , 74 • Laboratory Methods in Histotechnology ; AFIP 29(1992), Ph. Helv. VI •

HAZARDOUS: C.E: 601-022-00-9 • RTECS: ZE 2100000 • LD L0 oral man 50 mg/kg • LD L0 oral hmn 50 mg/kg • LD50 oral rat 4.300 mg/kg • LC L0 inh man 5320 ppm / 8h • LC L0 man 10000ppm (V) / 6h • LC L0 inh rat 5000 ppm / 4h • VLA-EC 100 ppm 442 mg/m³ VLA-ED 50 ppm 221 mg/m³



H: H226 • H332 • H312 • H315 •

P: P210 • P233 • P240 • P241 • P242 • P501 • P243 • P261 • P264 • P271 • P280 • P302+P352 • P303+P361+P353 • P304+P340 • P312 • P321 • P322 • P332+P313 • P362 • P363 • P370+P378 • P403+P235 •

TRANSPORT REGULATIONS: UN: 1307 • ADR: 3/III • IMDG: 3/III • IATA: 3/III • PAX: 355 • CAO: 366 • (D/E) •

WEIGHT/VOLUME INFORMATION: 1l~0,865 kg 1kg~1,156 l

SPECIFICATIONS:

Assay (G.C.) (isomers mixture C ₈ H ₁₀)	98%
Identity :	
Identity	IR passes test
Density at 20/4	0,862-0,864
Acidity	0,0003 meq/g
Alkalinity	0,00025 meq/g
Non-volatile matter	0,01 %
Thiophene (C ₄ H ₄ S)	0,0005%
Water (H ₂ O)	0,05 %
Cu	0,00002 %
Fe	0,00005 %
Ni	0,00002 %
Pb	0,00002 %

Ed.: 5 . Vig.: 15.02.2017 .

Prod.: 141769