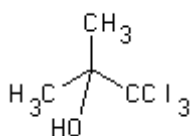
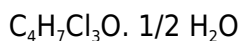




PRODUCT CODE: 145300

1,1,1-Trichloro-2-Methyl-2-Propanol 1/2-hydrate (BP, Ph. Eur.) pure, pharma grade

Storage between +8 and +15°C.



M.= 186,47

CAS [6001-64-5]

EINECS 200-317-6

TARIC 2905 59 98 90

SYNONYMS: 2,2,2-Trichloro terc-Butanol, Acetone Chloroform, Chlorbutol, Chlorobutanol

PHYSICAL DATA: crystalline powder, White, Slightly soluble in water. Soluble in alcohol. Thermal decom. 167 °C •
M.P.: 78 °C • B.P.: 167 °C • pH(20 g/l sol.)5 •

BIBLIOGRAPHY: Merck Index **12**, 2.180 13, 2.148 Beilstein **1**, **IV**, **1629** • BRN 878167 • BP.2018 • USP -NF 36
• Ph. Eur. **8.0** (2014) **9.0** (2017) • Royal Decree I698 •

HAZARDOUS:

SPECIFICATIONS:

Assay (Arg.) (calc. a.a.s)	98,0-101,0%
Identity :	
Identity according to Pharmacopoeias:	passes test
Maximum limit of impurities	
Appearance of solution	passes test

Acidity	passes test
Insoluble matter in C ₂ H ₅ OH 96%	passes test
Residue on ignition (as SO ₄)	0,1 %
Chloride (Cl)	0,01%
Residual solvents (Ph.Eur.)	passes test
Water (H ₂ O)	4,5-5,5 %
Elemental impurities (ICH Q3D):	
Class 1	
Cd	0,5 ppm
Pb	0,5 ppm
As	1,5 ppm
Hg	1,5 ppm
Class 2A	
Co	5 ppm
V	10 ppm
Ni	20 ppm
Class 2B	
Tl	0,8 ppm
Au	10 ppm
Pd	10 ppm
Ir	10 ppm
Os	10 ppm
Rh	10 ppm
Ru	10 ppm
Se	15 ppm
Ag	15 ppm
Pt	10 ppm
Class 3	
Li	55 ppm
Sb	120 ppm
Ba	140 ppm
Mo	25 ppm
Cu	250 ppm
Sn	600 ppm
Cr	25 ppm