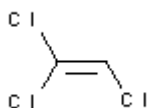
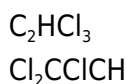


**PRODUCT CODE: 161749****Trichloroethylene, 99% stabilized with ethanol for synthesis**

M.= 131,39

CAS [79-01-6]

EINECS 201-167-4

TARIC 2903 22 00 00

SYNONYMS: 1,1,2-Trichloroethylene, Ethylene Trichloride, Ethynyl Trichloride, Trichloroethene •

PHYSICAL DATA: liquid, Clear, Colourless, Soluble in water 0,4 g/l at 20 °C D 20/4 1,46 • M.P.: -84,8 °C • B.P.: 86,7 °C • n₂₀/D : 1,4774 • Ign. T.:410 °C • Vap. press. (20 °C) 77 hPa • Viscosity 20 °C 0,55 mPa.s • D. M. 20 °C 0,8 Debye • Dielec. constant 16 °C 3,42 • Heat evap. 87 °C 240 KJ/Kg • Satur. conc. 20 °C 415 g/m³ • Expl. limit 7,9 % (V) 9 % (V) •

BIBLIOGRAPHY: Merck Index **12**, 9.769 13, 9.713 Sax **TIO750** • Safety **2**, **3412 D** • Kühn-Birett **T 21** • Ullmann **(5.)6**, 299 • Beilstein **1**, **187 I**, **78 II**, **159 III**, **658 IV**, **712** • BRN 1736782 • Fieser **9479 10414 11552** • ACS **X706 IX675** • F.C.C **IV425** •

HAZARDOUS: C.E: 602-027-00-9 • RTECS: KX 4550000 • LD₅₀ oral mus 2.402 mg/kg • LD₀₁ oral rbt 7.330 mg/kg • LD₀₁ oral man 7.000 mg/kg • LC₀₁ inh man 2900 ppm • LC₅₀ rat 64.8 mg/m³ / 4h • LD₅₀ skn rbt 12.124 mg/kg • VLA-EC 546 mg/m³ VLA-ED 273 mg/m³



H: H350 • H319 • H315 • H412 • H336 • H341 • H317 •

P: P201 • P202 • P261 • P264 • P271 • P273 • P280 • P281 • P302+P352 • P304+P340 • P305+P351+P338 • P308+P313 • P312 • P321 • P332+P313 • P337+P313 • P362 • P403+P233 • P405 • P501 •

TRANSPORT REGULATIONS: UN: 1710 • ADR: 6.1/III • IMDG: 6.1/III • IATA: 6.1/III • PAX: 655 • CAO: 663 • (E) •

WEIGHT/VOLUME INFORMATION: 1l~1,46 kg 1kg~0,68 l

SPECIFICATIONS:

Minimum assay (G.C.) (stabilizer not included)	99,5%
Minimum assay (G.C.)	99%
Identity :	
Identity	IR passes test
Acidity(as HCl)	0,001%
Ethanol (G.C.)	0,5%
Water (H2O)	0,02 %

Ed.: 3 . Vig.: 15.01.2011 .

Prod.: 161749