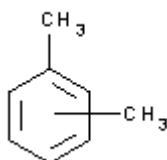


**PRODUCT CODE: 161769****Xylene, 98.5% mixture of isomers for synthesis** $C_8H_{10}$  $C_8H_{10}$ 

M.= 106,17

CAS [1330-20-7]

EINECS 215-535-7

TARIC 2902 44 00 00

**Isomer mixture, mainly m-Xylene ca. 70%, Ethylbenzene 20% and variable amounts of o- and p-Xylene .****SYNONYMS:** Dimethylbenzene, Xilol

**PHYSICAL DATA:** liquid, Clear, Colourless, Soluble in water 0,2 g/l at 20 °C D 20/4 0,864 • B.P.: 137 - 144 °C • n<sub>20/D</sub> : 1,497 • Flash P.: 29 °C • Ign. T.: 465 °C • Vap. press. (20 °C) 8 hPa • Dielec. constant 25 °C 2,4 • Evap. number (DIN 53170) 13,5 • Satur. conc. 20 °C 35 g/m<sup>3</sup> • Expl. limit 1,7 % (V) 7,6 % (V) •

**BIBLIOGRAPHY:** Merck Index **12**, 10.214 13, 10.136 Sax **XGS000** • Safety **2** , **3619 C** • Kühn-Birett **X 3** • Ullmann **(5.)** 13 , 409 • Beilstein **5** , **360** • ACS **XI** • ISO 6353/3-1987R - 95 , 74 • Laboratory Methods in Histotechnology ; AFIP 29(1992), Ph. Helv. VI •

**HAZARDOUS:** C.E: 601-022-00-9 • RTECS: ZE 2100000 • LD L0 oral man 50 mg/kg • LD L0 oral hmn 50 mg/kg • LD50 oral rat 4.300 mg/kg • LC L0 inh man 5320 ppm / 8h • LC L0 man 10000ppm (V) / 6h • LC L0 inh rat 5000 ppm / 4h • VLA-EC 100 ppm 442 mg/m<sup>3</sup> VLA-ED 50 ppm 221 mg/m<sup>3</sup>



H: H226 • H332 • H312 • H315 •

P: P210 • P233 • P240 • P241 • P242 • P501 • P243 • P261 • P264 • P271 • P280 • P302+P352 • P303+P361+P353 • P304+P340 • P312 • P321 • P322 • P332+P313 • P362 • P363 • P370+P378 • P403+P235 •

**TRANSPORT REGULATIONS:** UN: 1307 • ADR: 3/III • IMDG: 3/III • IATA: 3/III • PAX: 355 • CAO: 366 • (D/E) •

**WEIGHT/VOLUME INFORMATION:** 1l~0,865 kg      1kg~1,156 l

**SPECIFICATIONS:**

Minimum assay (G.C.) (isomers mixture C <sub>8</sub> H <sub>10</sub> )	98,5%
Identity :	
Identity	IR passes test
Density at 20/4	0,862-0,864
Non-volatile matter	0,005 %
Water (H <sub>2</sub> O)	0,05 %

Ed.: 3 . Vig.: 15.01.2011 .

Prod.: 161769