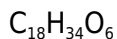
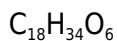


**PRODUCT CODE: 146101****Sorbitan Monolaurate (USP-NF, BP, Ph. Eur.) pure, pharma grade**



M.= 346,52

CAS [1338-39-2]

EINECS 215-663-3

TARIC 3824 90 96 99

SYNONYMS: Sorbitan Laurate, Sorbitan Monododecanoate, Span20**PHYSICAL DATA:** liquid, viscous, Yellow-brownish, Insoluble in water Miscible with alcohol • D 20/4 1 • B.P.:> 100 °C • n₂₀/D : 1,474 • Flash P.:>149 °C • Vap. press. (20 °C) 1,3 hPa • Viscosity 25 °C 4.250 mPa.s •**BIBLIOGRAPHY:** Merck Index **13**, 8.796 Sax **62459** • BP.**2018** • USP -**NF 36** • Ph. Eur. **8.0** (2014) **9.0** (2017) •**HAZARDOUS:** RTECS: WG2920000 • LD50 oral rat 33.600 mg/kg •**WEIGHT/VOLUME INFORMATION:** 1l~1,00 kg 1kg~1,00 l**OBSERVATIONS:** Storage away from direct light. •**SPECIFICATIONS:**

Assay (as fatty acids)	55,0-63,0 %
Assay (as polyols)	39,0-45,0 %
Identity :	
Identity according to Pharmacopoeias:	passes test

Maximum limit of impurities

Residue on ignition	0,5 %
Acidity value	7
Hydroxyl value	330-358
Iodine value	10

Peroxide value	5,0
Saponification value	158-170
Composition of fatty acids	passes test
Residual solvents (Ph.Eur/USP)	passes test
Water (H ₂ O)	1,5 %
Heavy metals (as Pb)	0,001%

Elemental impurities (ICH Q3D):

Class 1

Cd	0,5 ppm
Pb	0,5 ppm
As	1,5 ppm
Hg	1,5 ppm

Class 2A

Co	5 ppm
V	10 ppm
Ni	20 ppm

Class 2B

Tl	5 ppm
Au	10 ppm
Pd	10 ppm
Ir	10 ppm
Os	10 ppm
Rh	10 ppm
Ru	10 ppm
Se	15 ppm
Ag	15 ppm
Pt	10 ppm

Class 3

Li	55 ppm
Sb	120 ppm
Ba	140 ppm
Mo	25 ppm
Cu	250 ppm
Sn	600 ppm
Cr	25 ppm