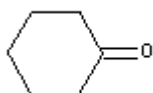
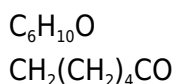


**PRODUCT CODE: 161890****Cyclohexanone, 99.5% for synthesis**

---



M.= 98,14                      CAS [108-94-1]  
TARIC 2914 22 00 00

EINECS 203-631-1

**SYNONYMS:** Ketoexamethylene, Pimelic Ketone

**PHYSICAL DATA:** liquid, Clear, Colourless, Soluble in water 150 g/l D 20/4 0,9478 • M.P.: -16,4 °C • B.P.: 155,6 °C • n<sub>20/D</sub> : 1,4507 • Flash P.: 44 °C • Ign. T.: 420 °C • Vap. press. (20 °C) 4,7 hPa • D. M. 20 °C 2,9 Debye • Dielec. constant 25 °C 18,3 • Satur. conc. 20 °C 19 g/m<sup>3</sup> • Expl. limit 1,2 %(V) 8,3 %(V) •

**BIBLIOGRAPHY:** Merck Index **12**, 2.795 13, 2.755 Sax **CPC000** • Safety **2 , 965 A** • Kühn-Birett **C 36** • Ullmann **(5.)8 , 217** • Beilstein **7 , 8 I , 6 II , 5 III , 14 IV, 15** • BRN 385735 • Fieser **1178** • ACS **XI** •

**HAZARDOUS:** C.E: 606-010-00-7 • RTECS: GW 1050000 • LD L0 oral rbt 1.600 mg/kg • LD50 oral rat 1.535 mg/kg • TC L0 man 75ppm • LC L0 mus 19200mg/m<sup>3</sup> / 1 ½ h • LD50 skn rbt 948 mg/kg • LD50 ipr mus 1.230 mg/kg VLA-EC 20 ppm82 mg/m<sup>3</sup> VLA-ED 10 ppm98 mg/m<sup>3</sup>



H: H226 • H332 •

P: P210 • P233 • P240 • P241 • P242 • P501 • P243 • P261 • P271 • P280 • P303+P361+P353 • P304+P340 • P312 • P370+P378 • P403+P235 •

**TRANSPORT REGULATIONS:** UN: 1915 • ADR: 3/III • IMDG: 3/III • IATA: 3/III • PAX: 355 • CAO: 366 • (D/E) •**WEIGHT/VOLUME INFORMATION:** 1l~0,947 kg      1kg~1,056 l

**SPECIFICATIONS:**

Minimum assay (G.C.)	99,5%
Identity :	
Identity	IR passes test
Density at 20/4	0,945-0,948
Water (H2O)	0,1 %

Ed.: 3 . Vig.: 15.01.2011 .

Prod.: 161890