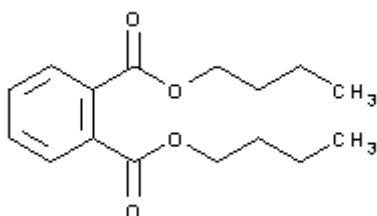
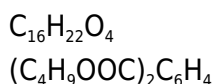


**PRODUCT CODE: 141937****Di-n-Butyl Phthalate pure**

M.= 278,35

CAS [84-74-2]

EINECS 201-557-4

TARIC 2917 34 00 90

SYNONYMS: DBP, n-Butyl Phthalate, Phthalic Acid Dibutyl Esther

PHYSICAL DATA: liquid, Clear, Colourless, Soluble in water 0,4 g/l at 20 °C D 20/4 1,048 • M.P.: -35 °C • B.P.: 340 °C • n₂₀/D : 1,492 • Flash P.:171 °C • Ign. T.:370 °C •

BIBLIOGRAPHY: Merck Index **12**, 1.622 13, 1.586 Sax **DEH200** • Safety **2** , **1105 A** • Ullmann **(5.)**14 , 306 • Beilstein **9** , **II** , **586 III** , **4102 IV** , **3175** • BRN 1914046 • BP.**2018** • USP **41** • Ph. Eur. **8.0** (2014) **9.0** (2017) • Royal Decree I1004 • JP XV •

HAZARDOUS: C.E: 607-318-00-4 • RTECS: TI 0875000 • LD50 oral rat 6.279 mg/kg • LC50 rat 15.68mg/m³ • NOAEL rat 152 mg/kg (subchronic)NOAEC rat 500 mg/m³ (subchronic)VLA-ED 5 mg/m³

Derived No Effect Level (DNEL)

Workers Inhalation, acute (systemic) 8,52 mg/m³ Workers Dermal, long exposure (systemic) 7.22mg/kg/24h
Workers Inhalation, long term (systemic) 4,17 mg/m³ Population, Dermal, long exposure (systemic) 2.2mg/kg
bw/24h Population Inhalation, long term (systemic) 0,62 mg/m³ Population, oral, long term (systemic) 0.22mg/kg
bw/24h

Predicted No Effect Concentration (PNEC)

Sediment 1.39mg/kg Sediment 0.39mg/kg Freshwater 10µg/l Marine water 1µg/l Water 3.5µg/l STP 0.22mg/l
Soil 2mg/kg



H: H360Df • H400 •
P: P201 • P202 • P273 • P281 • P308+P313 • P501 • P391 • P405 •

TRANSPORT REGULATIONS: UN: 3082 • ADR: 9/III • IMDG: 9/III • IATA: 9/III • PAX: 964 • CAO: 964 • (E) •

WEIGHT/VOLUME INFORMATION: 1l~1,047 kg 1kg~0,955 l

SPECIFICATIONS:

Assay (G.C.)	98%
Identity :	
Identity	IR passes test
Density at 20/20	1,045-1,048
Acidity(as C ₈ H ₆ O ₂)	0,02%
Residue on ignition (as SO ₄)	0,01 %
1-Butanol (G.C.)	0,2%
Water (H ₂ O)	0,2 %
Cu	0,00002 %
Fe	0,00005 %
Ni	0,00002 %
Pb	0,00002 %

Ed.: 5 . Vig.: 15.01.2011 .

Prod.: 141937