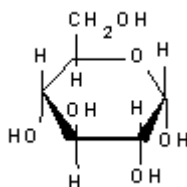
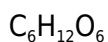
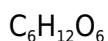


**PRODUCT CODE: 141341****D(+)-Glucose anhydrous (USP, BP, Ph. Eur.) pure, pharma grade**

M.= 180,16

CAS [50-99-7]

EINECS 200-075-1

TARIC 1702 30 50 10

SYNONYMS: Dextrose, D-Glucopyranose, Grape sugar**PHYSICAL DATA:** Small crystals, White, Soluble in water 900 g/l at 20 °C M.P.: 146 °C • pH6 - 7 •**BIBLIOGRAPHY:** Merck Index **12**, 4.467 13, 4.472 Sax **GFG000** • Beilstein **31 , 83 IV , 1 , 4302** • BRN 1724615 • ACS **XI** • BP.**2018** • USP **41** • Ph. Eur. **8.0** (2014) **9.0** (2017) 6.3 • F.C.C **10 11** • DAB 10 (1991) •**HAZARDOUS:** RTECS: LZ 6600000 • LD L0 oral rbt 20.000 mg/kg • LD50 oral rat 25.800 mg/kg • LD50 ipr mus 18.000 mg/kg**SPECIFICATIONS:**Assay (as C₆H₁₂O₆)

97,5 - 102,0 %

Identity :

Identity according to Pharmacopoeias:

passes test

Specific rotation [α]_{20/D} c=10 (in H₂O)

+52,6 - +53,2°

Maximum limit of impurities

Appearance and colour of solution

passes test

Acidity or alkalinity	passes test
Insoluble matter in H ₂ O	0,01 %
Residue on ignition (as SO ₄)	0,1 %
Residual solvents (Ph.Eur/USP)	passes test
Conductivity (20 % aq. Sol. 25°C)	20 uS/cm
Soluble starch and sulfites (as SO ₂)	0,0015 %
Related substances:	
Fructose	0,15 %
Maltose + Isomaltose	0,4 %
Maltotriose	0,2 %
Unspecified impurities	0,10 %
Total impurities	0,5 %
Dextrin	passes test
Water (H ₂ O)	0,5 %
Heavy metals (as Pb)	0,0005%
Ba	passes test
Ca	0,02 %
Fe	0,0005 %
Elemental impurities (ICH Q3D):	
Class 1	
Cd	0,5 ppm
Pb	0,5 ppm
As	1 ppm
Hg	1,5 ppm
Class 2A	
Co	5 ppm
V	10 ppm
Ni	20 ppm
Class 2B	
Tl	1 ppm
Au	10 ppm
Pd	10 ppm
Ir	10 ppm
Os	10 ppm
Rh	10 ppm
Ru	10 ppm
Se	15 ppm
Ag	15 ppm
Pt	10 ppm
Class 3	
Li	55 ppm
Sb	120 ppm
Ba	140 ppm
Mo	25 ppm
Cu	250 ppm
Sn	600 ppm
Cr	25 ppm