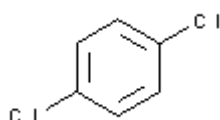
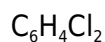
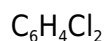


**PRODUCT CODE: 15A598****1,4-Dichlorobenzene, 99% for synthesis**



M.= 147,00

CAS [106-46-7]

EINECS 203-400-5

TARIC 2903 91 00 00

SYNONYMS: p-Dichlorobenzene**PHYSICAL DATA:** crystals, White, volatile, Insoluble in water D 1,241 • M.P.: 53 - 54 °C • B.P.: 174,12 °C • n₆₀/D : 1,5285 • Ign. T.: >500 °C • Vap. press. (20 °C) 0,8 hPa • Satur. conc. 20 °C 5 g/m³ •**BIBLIOGRAPHY:****HAZARDOUS:** C.E: 602-035-00-2 • LD L0 oral man 857 mg/kg • LD50 oral rat 500 mg/kg • LD50 ipr mus 2.000 mg/kg VLA-EC 50 ppm306 mg/m³ VLA-ED 20 ppm122 mg/m³

H: H319 • H351 • H410 •

P: P201 • P202 • P264 • P273 • P280 • P281 • P305+P351+P338 • P308+P313 • P337+P313 • P391 • P405 • P501 •

TRANSPORT REGULATIONS: UN: 3077 • ADR: 9/III • IMDG: 9/III • IATA: 9/III • PAX: 956 • CAO: 956 • (E) •**SPECIFICATIONS:**

Minimum assay (G.C.)

99%

Identity :
Identity
Melting range
Water (H₂O)

IR passes test
52-55°C
0,1 %

Ed.: 2 . Vig.: 15.01.2011 .

Prod.: 15A598