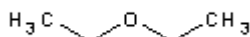
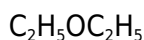
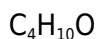




PRODUCT CODE: 132770

Diethyl Ether stabilized with ~ 6 ppm of BHT (Reag. Ph. Eur.) for analysis, ACS, ISO



M.= 74,12

CAS [60-29-7]

EINECS 200-467-2

TARIC 2909 11 00 00

FEMA 3-07

SYNONYMS: 1,1'-Oxibisethane, Diethyl Ether, Ethoxyethane, Ethyl Ether, Ethyl Oxide, Sulphuric Ether

PHYSICAL DATA: liquid, Clear, Colourless, Soluble in water 69 g/l at 20 °C D 20/4 0,71 • M.P.: -116 °C • B.P.: 34,6 °C • n_{20/D} : 1,3526 • Flash P.: -40 °C • Vap. press. (20 °C) 587 hPa • Viscosity 20 °C 0,23 mPa.s • D. M. 20 °C 1,25 Debye • Dielec. constant 20 °C 4,3 • Evap. number (DIN 53170) 1 • Heat evap. 35 °C 392 KJ/Kg • Satur. conc. 20 °C 1176 g/m³ • Expl. limit 1,7 %(V) 36 %(V) •

BIBLIOGRAPHY: Merck Index **12**, 3.852 13, 3.840 Sax **EJU000** • Safety **2**, **1549 A** • Kühn-Birett **A 19** • Beilstein **1**, **314 I**, **158 II**, **311 III**, **1289 IV**, **1314** • BRN 1696894 • ACS **XI** • ISO 6353/3-1987 R - 58, 23 • BP.**2018** • USP **41** • Ph. Eur. **8.0** (2014) **9.0** (2017) • Royal Decree **I885** •

HAZARDOUS: C.E: 603-022-00-4 • RTECS: KI 5775000 • LD L0 oral man 260 mg/kg • LD50 oral rat 1.215 mg/kg • LC50 inh rat 73000 ppm / 2h • VLA-EC 200 ppm 1.540 mg/m³ VLA-ED 100 ppm 1.230 mg/m³



H: H224 • H302 • H336 • EUH019 • EUH066 •

P: P210 • P261 • P301+P312 • P303+P361+P353 • P304+P340 • P312 • P243 • P233 • P264 • P270 • P271 • P280 • P240 • P241 • P242 • P501 • P330 • P370+P378 • P403+P233 • P403+P235 • P405 •

TRANSPORT REGULATIONS: UN: 1155 • ADR: 3/I • IMDG: 3/I • IATA: 3/I • PAX: 351 • CAO: 361 • (D/E) •

WEIGHT/VOLUME INFORMATION: 1l~0,715 kg 1kg~1,399 l

OBSERVATIONS: Product controlled as a drug precursor. • Storage away from direct light. • Storage between +8 and +15°C •

SPECIFICATIONS:

Minimum assay (G.C.)	99,7%
Identity :	
Identity	IR passes test
Density at 20/20	0,713-0,715
Range of Boiling	34-35°C

Maximum limit of impurities

APHA colour	10
Acidity	0,0002 meq/g

Non-volatile matter	0,001 %
Darkened substances by H2SO4	passes test
Carbonyl compounds (as HCHO)	0,001%
Peroxides (as H2O2)	0,00003 %*
Acetone (G.C.)	0,005%
Methanol (G.C.)	0,02%
Ethanol (G.C.)	0,05%
Water (H2O)	0,1 %

Metals by ICP [in mg/Kg (ppm)]

Ag	0,05
Al	0,5
As	0,05
Au	0,05
B	0,02
Ba	0,1
Be	0,02
Bi	0,05
Ca	0,5
Cd	0,05
Co	0,02
Cr	0,02
Cu	0,1
Fe	0,1
Ga	0,02
Ge	0,05
Hg	0,05
In	0,05
K	0,1
Li	0,05
Mg	0,1
Mn	0,02
Mo	0,02
Na	0,5
Ni	0,02
P	0,2
Pb	0,1
Pt	0,02
S	0,2
Sb	0,02
Si	0,2

Sn	0,1
Sr	0,2
Ti	0,02
Tl	0,02
V	0,02
Zn	0,1
Zr	0,02

*** At the moment of the batch analysis.**

Ed.: 3 . Vig.: 15.01.2011 .

Prod.: 132770