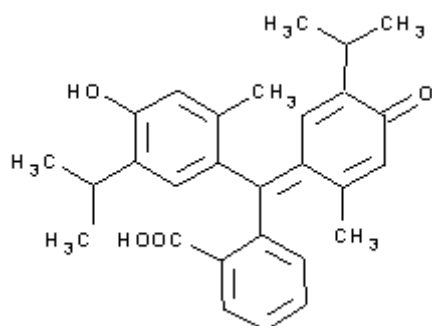
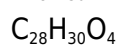
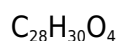




PRODUCT CODE: 281740

Thymolphthalein solution 0.1% for volumetric analysis

pH indicator 9,3 colourless; 10,5 blue



M.= 430,55 CAS [125-20-2]

TARIC 2932 20 90 90

PHYSICAL DATA: liquid, Clear, Colourless, Miscible with alcohol and water • Flash P.:22 °C •

BIBLIOGRAPHY:

HAZARDOUS: LD50 oral rat 7.060 mg/kg • VLA-ED (ethanol) 1.000 ml/m3 1.910 mg/m3



H: H225 •

P: P210 • P233 • P240 • P241 • P242 • P501 • P243 • P280 • P303+P361+P353 • P370+P378 • P403+P235 •

TRANSPORT REGULATIONS: UN: 1993 • ADR: 3/III • IMDG: 3/III • IATA: 3/III • PAX: 355 • CAO: 366 • (D/E) •

WEIGHT/VOLUME INFORMATION: 1l~0,900 kg 1kg~1,111 l

COMPOSITION:

Thymolphthalein	0,1 g
Ethanol absolute	60 ml
Water (s.q.m)	100 ml

SPECIFICATIONS:

Identity :	
Identity	passes test
pH transition interval:	
colourless	9,3
blue	10,5

Ed.: 2 . Vig.: 30.08.2017 .

Prod.: 281740