



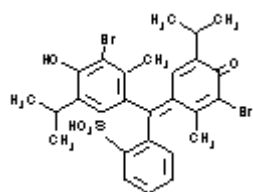
PRODUCT CODE: 281168

Bromothymol Blue solution 0.04% for volumetric analysis

pH indicator 6,0 yellow; 7,6 blue

$C_{27}H_{28}Br_2O_5S$

$C_{27}H_{28}Br_2O_5S$



M.= 624,40

CAS [76-59-5]

TARIC 2934 99 90 90

SYNONYMS: 3',3''-Dibromothymolsulphonephthalein, BTB

PHYSICAL DATA: liquid, Green, Miscible with alcohol and water • D 20/4 0,974 • Flash P.:38 °C •

BIBLIOGRAPHY:

HAZARDOUS: LD50 oral rat 7.060 mg/kg • LC50 inh rat 20000 ppm • VLA-ED (ethanol) 1.000 ppm1.910 mg/m3



H: H225 •

P: P210 • P243 • P280 •

TRANSPORT REGULATIONS: UN: 1993 • ADR: 3/III • IMDG: 3/III • IATA: 3/III • PAX: 355 • CAO: 366 • (D/E) •

WEIGHT/VOLUME INFORMATION: 1l~0,974 kg 1kg~1,027 l

COMPOSITION:

Bromothymol Blue

40 mg

Sodium Hydroxide 0.1 mol/l

0,8 ml

Ethanol absolute
Water (s.q.m)

20,4 ml
100 ml

Ed.: 1 . Vig.: 15.01.2011 .

Prod.: 281168