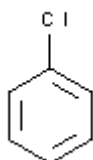


**PRODUCT CODE: 141953****Chlorobenzene pure** C_6H_5Cl C_6H_5Cl 

M.= 112,56

CAS [108-90-7]

EINECS 203-628-5

TARIC 2903 91 00 00

SYNONYMS: Benzene Chloride, mono-Chlorobenzene

PHYSICAL DATA: liquid, Clear, Colourless, Insoluble in water D 20/4 1,107 • M.P.: -45 °C • B.P.: 132 °C • pH7 • n_{20/D} : 1,5248 • Flash P.: 28 °C • Ign. T.: 590 °C • Vap. press. (20 °C) 12 hPa • Viscosity 20 °C 0,8 mPa.s • D. M. 20 °C 1,55 Debye • Dielec. constant 25 °C 5,6 • Satur. conc. 20 °C 54 g/m³ • Expl. limit 1,3 %(V) 11 %(V) •

BIBLIOGRAPHY: Merck Index **12**, 2.172 13, 2.139 Sax **BBM**750 • Safety **2**, **737 D** • Kühn-Birett **C** 16 • Beilstein **5**, **199 I**, **108 II**, **148 III**, **524 IV**, **640** • BRN 605632 • ACS **XI** •

HAZARDOUS: C.E: 602-033-00-1 • RTECS: CZ 0175000 • LD₅₀ oral rat 2.290 mg/kg • LC L0 rat 9000ppm • VLA-EC 15 ppm 70 mg/m³ VLA-ED 5 ppm 47 mg/m³



H: H226 • H332 • H411 • H315 •

P: P210 • P233 • P240 • P241 • P242 • P501 • P243 • P261 • P271 • P273 • P280 • P303+P361+P353 • P304+P340 • P312 • P370+P378 • P391 • P403+P235 • P264 • P302+P352 • P321 • P332+P313 • P362 •

TRANSPORT REGULATIONS: UN: 1134 • ADR: 3/III • IMDG: 3/III • IATA: 3/III • PAX: 355 • CAO: 366 • (D/E) •**WEIGHT/VOLUME INFORMATION:** 1l~1,108 kg 1kg~0,903 l

SPECIFICATIONS:

Assay (G.C.)	99%
Identity :	
Identity	IR passes test
Density at 20/4	1,106-1,110
Acidity	0,01 meq/g
Non-volatile matter	0,005 %
Sulfur compounds (as CS ₂)	0,001 %
Thiophene (C ₄ H ₄ S)	0,001%
1,2-Dichlorobenzene (G.C.)	0,05%
1,3-Dichlorobenzene (G.C.)	0,05%
1,4-Dichlorobenzene (G.C.)	0,05%
Benzene (G.C.)	0,05%
Water (H ₂ O)	0,2 %
Cu	0,00002 %
Fe	0,00005 %
Ni	0,00002 %
Pb	0,00002 %

Ed.: 3 . Vig.: 15.01.2011 .

Prod.: 141953