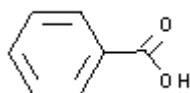
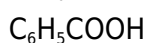
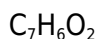


**PRODUCT CODE: 241014****Benzoic Acid standard for volumetry**

Primary Chemical Matter



M.= 122,12

CAS [65-85-0]

EINECS 200-618-2

TARIC 2916 31 00 90

SYNONYMS: Benzenecarboxylic acid, Phenylformic acid**PHYSICAL DATA:** crystalline powder, White, in water at 20°C M.P.: 122,4 °C(Handbook) • B.P.: 249,2 °C (Handbook) • pH(Handbook)25 °C2,8 • Vap. press. (96 °C) 1,3 hPa(Handbook) • Sublime100 °C •**BIBLIOGRAPHY:** Merck Index **13**, 1.092 Sax **BCL750** • Safety **2**, **360 A** • Römp **8**, **400** • Beilstein **9**, **92 I**, **54 II**, **72 III**, **360 IV**, **273** • BRN 636131 • Fieser **149** • ACS **XI** • BP.**2018** • USP **41** • Ph. Eur. **8.0** (2014) **9.0** (2017) 6.4 • F.C.C **10 11** • BOE **243**(8-10-2009) • Regulation (EU) n° 231/2012 BRETH: 669 •**HAZARDOUS:** RTECS: DG 0875000 • LD50 oral rat 2.565 mg/kg / (OECD 423) • NOAEL oral rat >500 mg/kg / Not classified as toxic for reproduction., Risk of aspiration., Not classified. • LC50 rat 12.2mg/l / 4h, (OECD 402) • NOAEL rat 250mg/m3 / Specific organ toxicity (repeated exposure):, May cause respiratory irritation. • LD50 skn rbt 2.000 mg/kg / (OECD 403) • NOAEL skn rat 2.500 mg/kg • DNEL Workers Dermal, long exposure (systemic) 34.7mg/kg/24h DNEL Workers Dermal, long exposure (local) 4.5mg/cm2 DNEL Workers Dermal, long exposure (systemic) 10,4 mg/m3 DNEL Workers Inhalation, long term (local) 6,3 mg/m3 DNEL Population, oral, long term (systemic) 25mg/kg/24h DNEL Population Inhalation, long term (systemic) 2,1 mg/m3 DNEL Population, Dermal, long exposure (systemic) 20.8mg/kg/24h DNEL Population, Dermal, long exposure (local) 2.7mg/cm2 DNEL Population Inhalation, long term (local) 1,3 mg/m3

H: H318 • H372 • H315 •

P: P260 • P264 • P270 • P280 • P305+P351+P338 • P501 • P310 • P314 • P302+P352 • P321 • P332+P313 • P362 •

SPECIFICATIONS:

Uncertainty	See certificate
Traceability	NIST
Assay (Acidim.) after dried on SiO ₂	99,95 - 100,05 %
Identity :	
Identity	IR passes test
Melting range	122-123°C

Maximum limit of impurities

Insoluble matter in CH ₃ OH	0,005 %
Reducing substance to KMnO ₄	passes test
Darkened substances by H ₂ SO ₄	passes test
Residue on ignition (as SO ₄)	0,005 %
Sulfur compounds (as S)	0,01 %
Chlorine compounds (as Cl)	0,01%

Heavy metals (as Pb)	0,0005%
----------------------	---------

As	0,0003	%
Cu	0,0005	%
Fe	0,0002	%
Ni	0,0005	%
Pb	0,0005	%