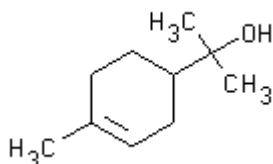


**PRODUCT CODE: 15A585****alpha-Terpineol, 70% for synthesis**

 $C_{10}H_{18}O$ $C_{10}H_{18}O$ 

M.= 154,25

CAS [98-55-5]

EINECS 202-680-6

TARIC 2906 19 00 90

FEMA 3045

This product contains ~70% of a-Terpineol, ~12% of g-Terpineol, ~15% of isomers C₁₀H₁₈O different from a and g - Terpineoland ~2-3% of terpenics hidrocarbons .

SYNONYMS: a,a,4-Trimethyl-3-Cyclohexene-1-Methanol, p-Menth-1-en-8-ol

PHYSICAL DATA: liquid, Colourless, Insoluble in water D (20 °C) 0,933 • M.P.: 31 °C • B.P.: 215 °C 217 °C • n₂₀/D : 1,482 • Flash P.:90 °C • Vap. press. (40 °C) 0,24 hPa •

BIBLIOGRAPHY:

HAZARDOUS: LD50 oral rat 5.170 mg/kg •

WEIGHT/VOLUME INFORMATION: 1l~0,933 kg 1kg~1,072 l

SPECIFICATIONS:

Assay (en a-Terpineol) (G.C.)

70%

Assay (as C₁₀H₁₈O) (G.C.)

97%

Density at 20/4

0,931-0,935

Refractive Index n

1,4800-1,4855

Ed.: 3 . Vig.: 15.01.2011 .

Prod.: 15A585